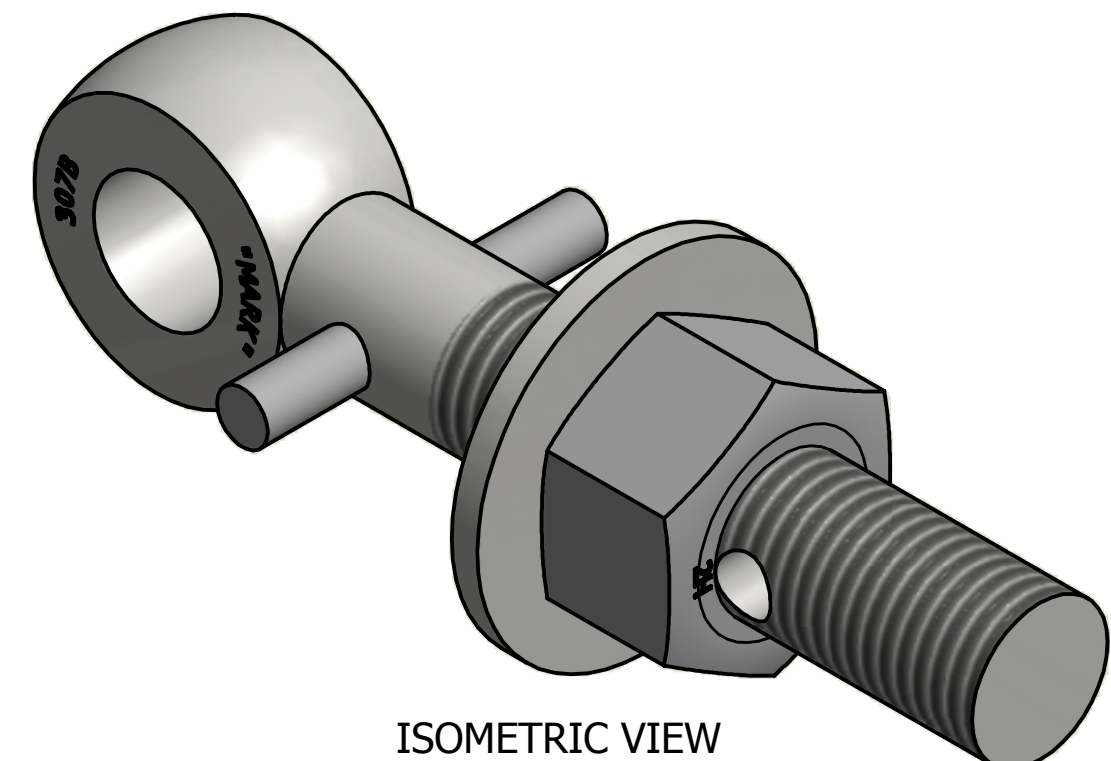
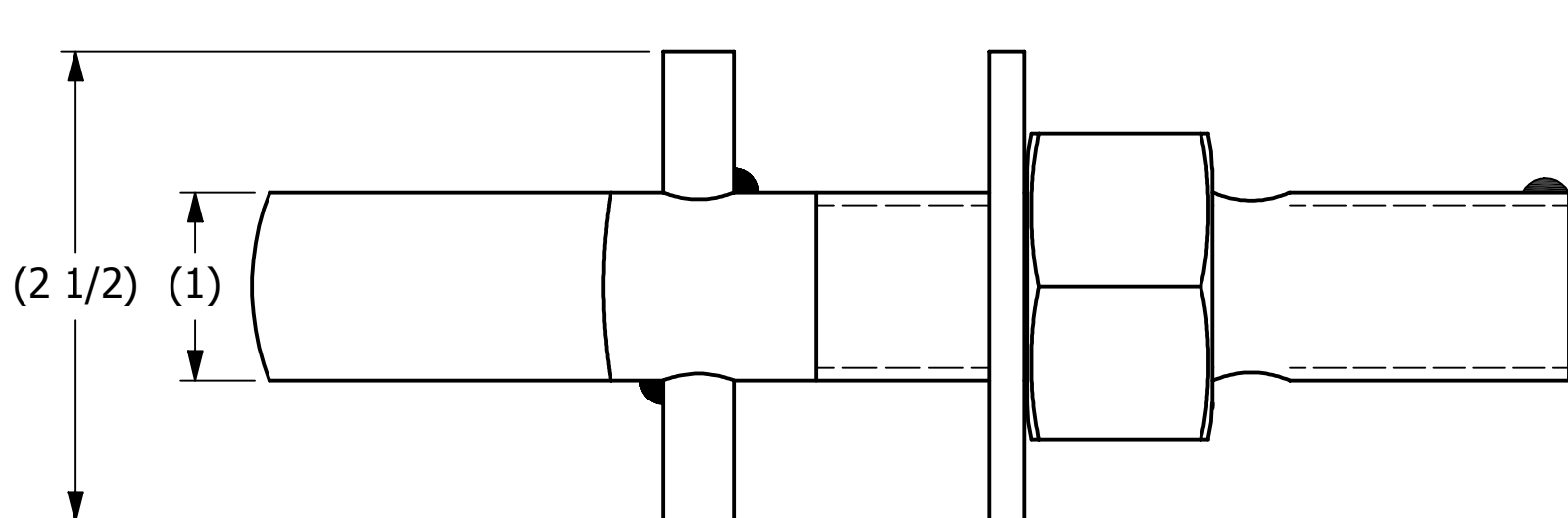
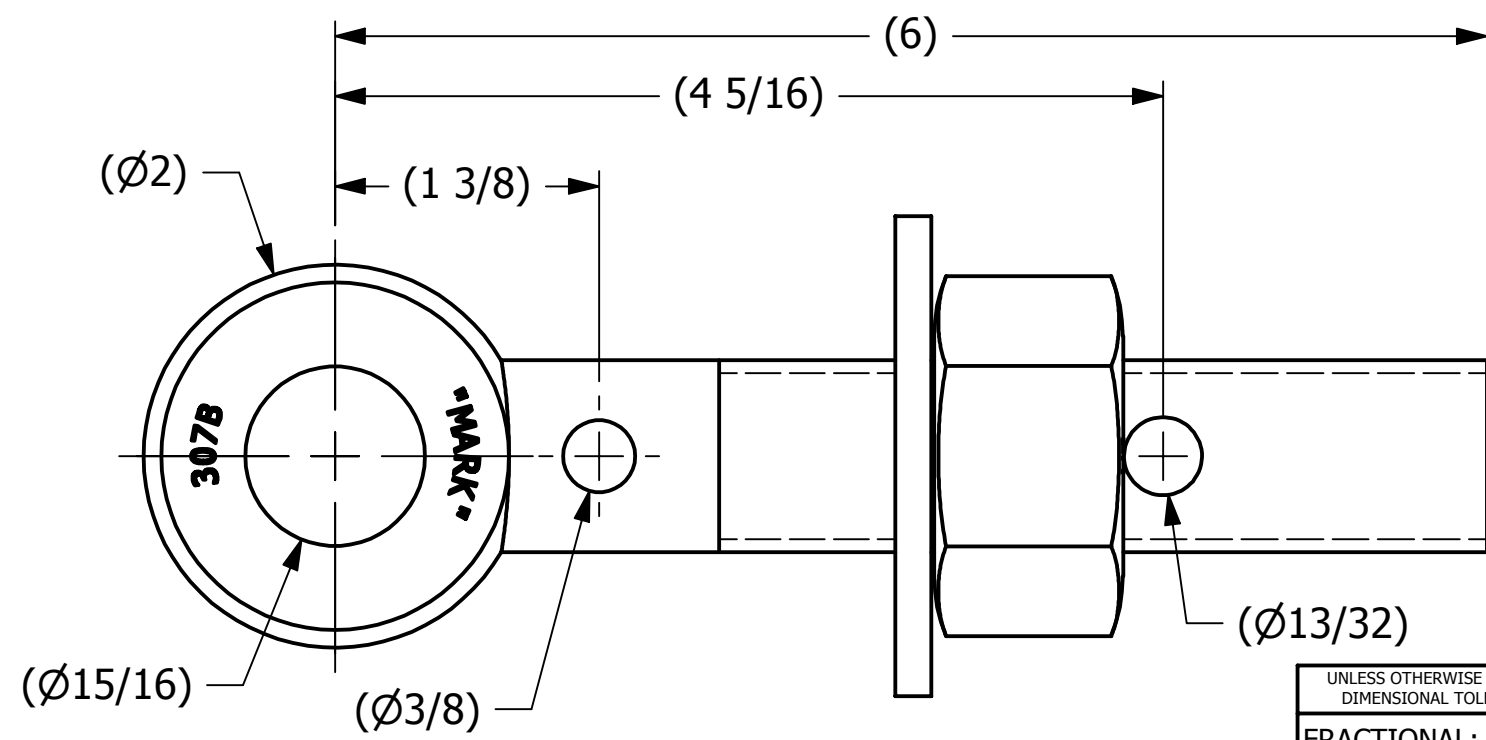


SALES DRAWING

SALES DRAWING



ISOMETRIC VIEW



REV	BY	DATE	DESCRIPTION
D	CHL	6-10-11	CHANGED EYEBOLT MATERIAL
C	CHL	3-13-03	REPLACED A16204,EBR16HPR W/WELD STOP, EBR16HP & MADE ALL DIMS FRACTIONAL
B	CHL	11-26-01	REPLACED SN14S W/A16204
A	CHL	4-26-01	REPLACED WASH1 WITH WASH1P

UNLESS OTHERWISE SPECIFIED DIMENSIONAL TOLERANCES		DRAWN BY:	FOD
FRACTIONAL:	$\pm 1/16$	CHECKED BY:	SAB
X.XX:	$\pm .03$	PROTOTYPE BY:	FOD
X.XXX:	$\pm .015$	PROTOTYPE DATE:	3/16/2000
ANGULAR:	$\pm 1^\circ$	APPROVED FOR PRODUCTION BY:	SAB
THIS PRINT, PROPERTY OF SALCO PRODUCTS INC., CONTAINS PROPRIETARY INFORMATION AND MUST NOT BE COPIED, REPRODUCED, OR USED DETRIMENTALLY TO OUR INTEREST.		PRODUCTION DATE:	3/16/2000
THIRD ANGLE PROJECTION			

PART NAME: EYEBOLT ASSEMBLY 1"X6"		
MATERIAL: CARBON STEEL		
PROJECT #:	SHEET #: 1 OF 1	SCALE: 1:1
DRAWING #: B14479	PART #: EB16XHAP	

B

B

A

A

A

A

4

3

2

1

4

3

2

1